



Beaufort County Public Works Stormwater Infrastructure Project Summary

Project Summary: Ihly Farm - Phase I

Activity: Routine/Preventive Maintenance

Narrative Description of Project:

Completion: Sep-13

Project improved 5,565 L.F. of drainage system. Shinn cut 2,250 L.F. of channel, workshelf and roadside ditch. Reconstructed 1,150 L.F. of channel, 2,320 L.F. of lateral ditches and 600 L.F. of roadside ditch. Cleaned out 1,855 L.F. of channel and 600 L.F. of roadside ditch. Upsized (5) crsossline pipes and extended (4) crossline pipes. Installed (2) access pipes and rip rap for erosion control. Jetted (2) crossline pipes. Repaired washout. Hydroseeded for erosion control.

2013-659 / Ihly Farm - Phase I	Labor Hours	Labor Cost	Equipment Cost	Material Cost	Contractor Cost	Indirect Labor	Total Cost
APINS / Access pipe - installed	36.0	\$849.37	\$262.87	\$670.81	\$0.00	\$504.60	\$2,287.64
AUDIT / Audit Project	2.5	\$51.15	\$0.00	\$0.00	\$0.00	\$33.08	\$84.23
CLPEX / Crossline Pipe - Extended	12.0	\$245.50	\$61.79	\$158.65	\$0.00	\$170.13	\$636.07
CLPI / Crossline Pipe - Installation	82.0	\$1,847.85	\$332.99	\$727.18	\$0.00	\$811.60	\$3,719.62
CLPJT / Crossline Pipe - Jetted	11.0	\$237.90	\$121.88	\$63.81	\$0.00	\$90.59	\$514.17
CPUP / Crossline Pipe - Upsized	21.0	\$477.41	\$181.75	\$352.15	\$0.00	\$210.64	\$1,221.95
HAUL / Hauling	381.0	\$8,277.36	\$4,944.60	\$9,587.04	\$0.00	\$5,297.27	\$28,106.28
HYDR / Hydroseeding	21.0	\$491.99	\$113.52	\$456.91	\$0.00	\$266.58	\$1,329.01
LM / Loading Materials	129.0	\$2,825.80	\$1,609.37	\$466.48	\$0.00	\$1,478.76	\$6,380.41
ODCO / Outfall ditch - cleaned out	139.0	\$3,112.37	\$879.42	\$1,079.09	\$0.00	\$1,624.88	\$6,695.76
ODGRB / Outfall ditch - grubbed	20.0	\$458.00	\$197.80	\$75.67	\$0.00	\$187.20	\$918.67
ODREC / Outfall ditch - reconstructed	90.0	\$1,989.63	\$784.52	\$156.07	\$0.00	\$1,094.20	\$4,024.42
ODSHN / Outfall ditch - Shinn cut	23.0	\$514.33	\$339.46	\$202.37	\$0.00	\$224.84	\$1,281.00
ONJV / Onsite Job Visit	116.0	\$3,816.44	\$425.72	\$248.10	\$0.00	\$2,607.77	\$7,098.03
RDREC / Roadside ditch - reconstructed	30.0	\$651.40	\$222.11	\$102.90	\$0.00	\$187.20	\$1,163.61
RMTRD / Remove trees - Ditch	14.0	\$285.81	\$106.94	\$24.01	\$0.00	\$93.80	\$510.56
RPWO / Repaired Washout	3.0	\$64.89	\$22.09	\$28.13	\$0.00	\$39.69	\$154.80
RSDCL / Roadside Ditch - Cleanout	60.0	\$1,302.91	\$496.87	\$277.94	\$0.00	\$642.40	\$2,720.13
WSDR / Workshelf - Dressed	20.0	\$458.68	\$273.77	\$99.47	\$0.00	\$321.20	\$1,153.12
WSGRB / Workshelf - Grubbed	130.0	\$2,846.97	\$1,841.23	\$618.98	\$0.00	\$1,510.70	\$6,817.87
WSSHN / Workshelf - Shinn cut	189.0	\$4,201.12	\$2,784.79	\$1,252.72	\$0.00	\$2,146.10	\$10,384.73
2013-659 / Ihly Farm - Phase I	1,529.5	\$35,006.89	\$16,003.49	\$16,648.48	\$0.00	\$19,543.22	\$87,202.08
Sub Total							
Grand Total	1,529.5	\$35,006.89	\$16,003.49	\$16,648.48	\$0.00	\$19,543.22	\$87,202.08

Before



During



After



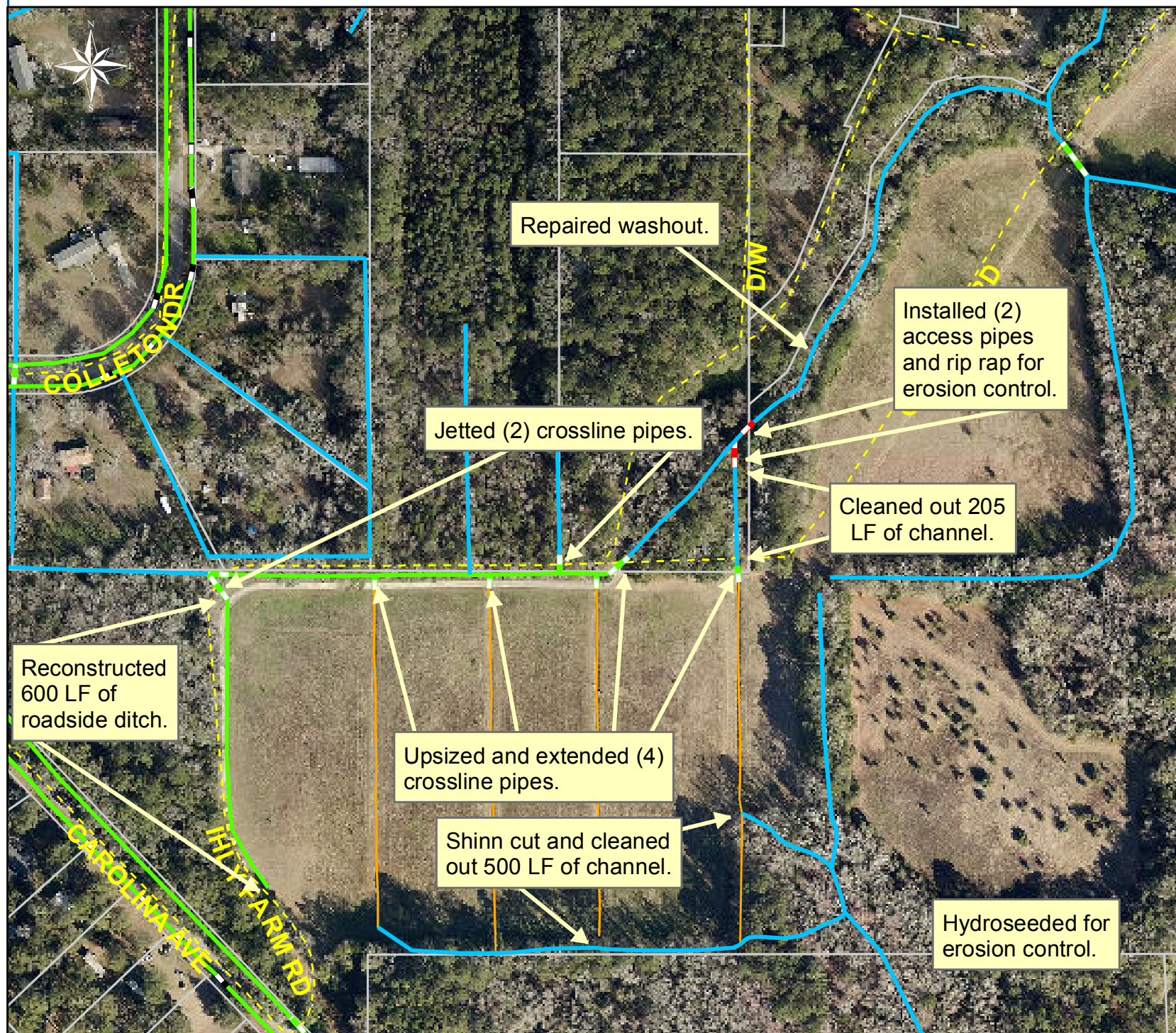
**Project: Ihly Farm
Phase I Map 1**

**Activity: Routine/
Preventive
Maintenance**

**Project #:
2013-659**

**Township: Port
Royal Island**

**Completed:
September 2013**



Legend

TYPE

- River
- Creek/Stream
- River/Creek/Marsh BANK
- Channel (fka Outfall)
- Channel Pipe
- Lateral
- Lateral Pipe
- Roadside
- Roadside Pipe
- Road Pipe
- Crossline Pipe
- Driveway Pipe
- Access Pipe
- Bleeder Pipe

0 60 120 240 360 480
Feet

1 inch = 234 feet

Prepared By: BC Stormwater Management Utility

Date Print: 10/31/13

File: C:/sethdata/projects/projectmaps/Ihly Farm Rd 2013-659 Map1

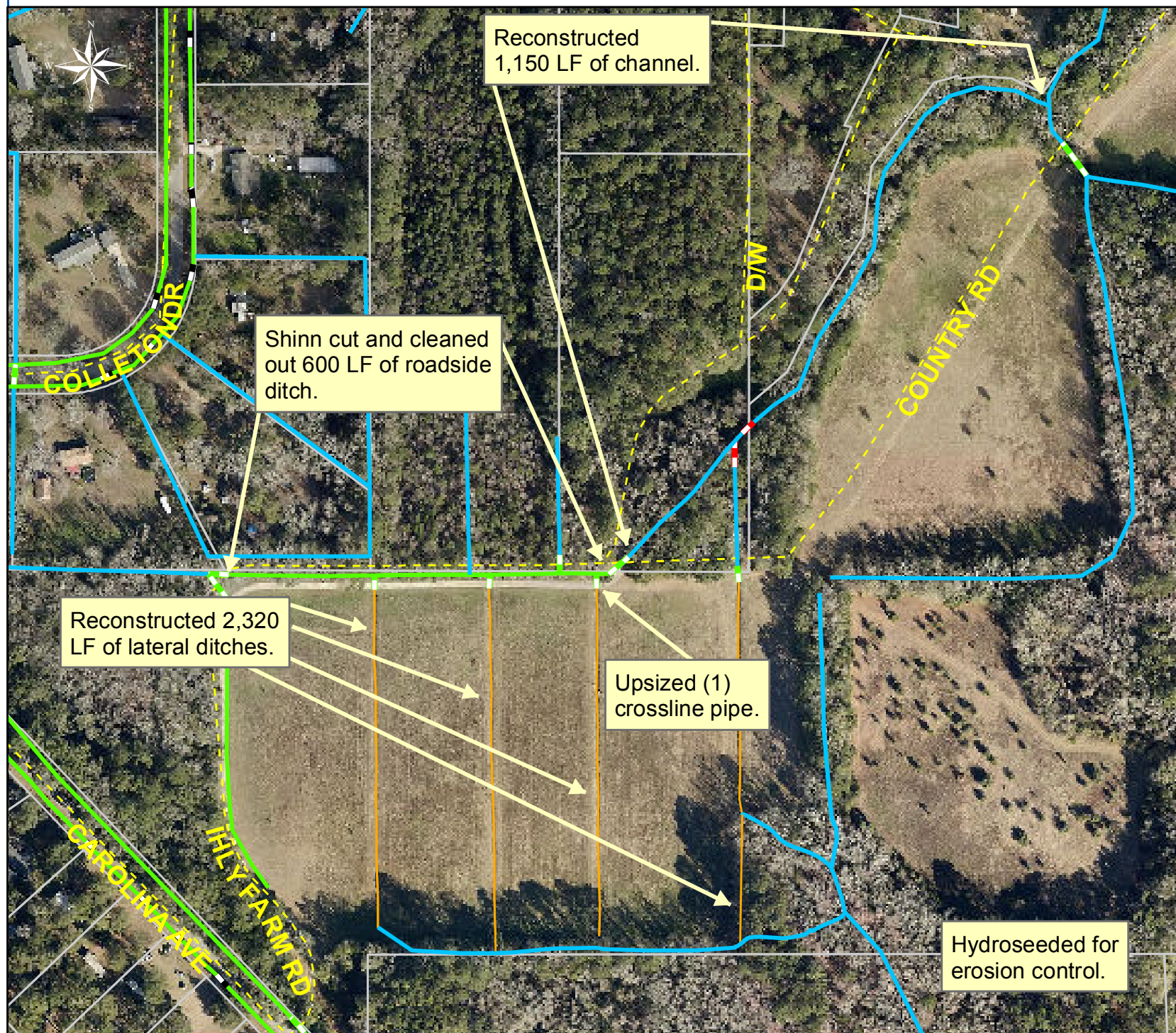
**Project: Ihly Farm
Phase I Map 2**

**Activity: Routine/
Preventive
Maintenance**

**Project #:
2013-659**

**Township: Port
Royal Island**

**Completed:
September 2013**



Legend

TYPE

- River
- Creek/Stream
- River/Creek/Marsh BANK
- Channel (fka Outfall)
- Channel Pipe
- Lateral
- Lateral Pipe
- Roadside
- Roadside Pipe
- Road Pipe
- Crossline Pipe
- Driveway Pipe
- Access Pipe
- Bleeder Pipe

0 60 120 240 360 480
Feet

1 inch = 234 feet

Prepared By: BC Stormwater Management Utility

Date Print: 10/31/13

File: C:/sethdata/projects/projectmaps/Ihly Farm Rd 2013-659 Map2